



The programme is funded
by the European Union



BOMCA
BORDER MANAGEMENT
PROGRAMME IN CENTRAL ASIA



**RIGA TECHNICAL
UNIVERSITY**

Strategic Vision and Future Trends

Normunds Rudzitis

Assistant professor

Riga Technical University

Istanbul, December 7, 2023



The programme is funded by the European Union

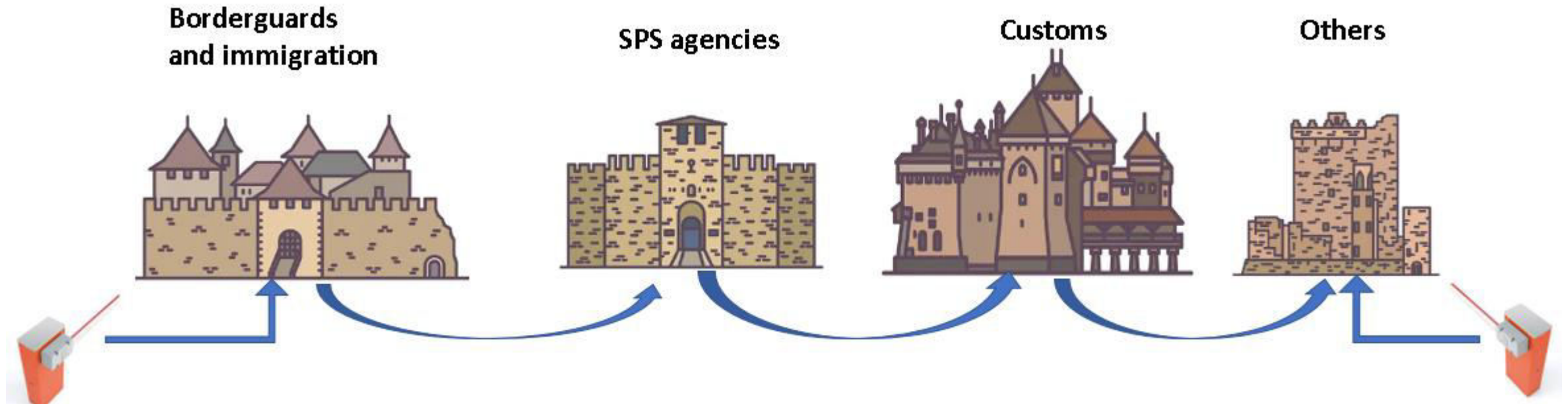


BOMCA
BORDER MANAGEMENT
PROGRAMME IN CENTRAL ASIA



**RIGA TECHNICAL
UNIVERSITY**

Fortresses approach





The programme is funded by the European Union

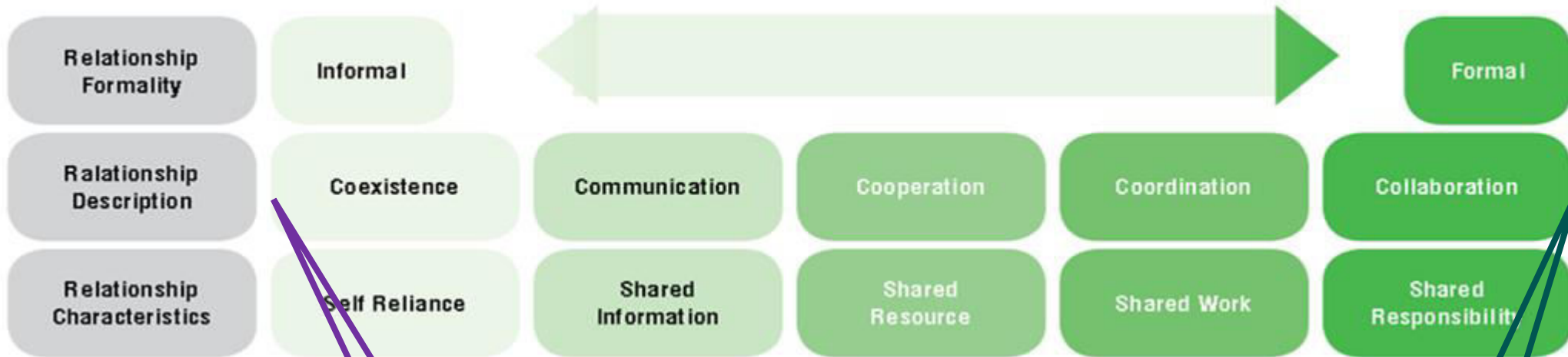


BOMCA
BORDER MANAGEMENT
PROGRAMME IN CENTRAL ASIA



**RIGA TECHNICAL
UNIVERSITY**

Border management development



Coordinated border management: An Inclusive approach for connecting stakeholders, Compendium, World Customs Journal, 2023

Better Connected Services for Kiwis, Institute of Policies Study, New Zealand, 2008

	Trust						
	Compete	Co-exist	Communicate	Cooperate	Coordinate	Collaborate	Integrate
Turf	Competition for clients, resources, partners, public attention	No systematic connection between agencies	Inter-agency information sharing (e.g., networking)	As needed, often informal interaction on discrete activities or projects	Groups and organizations systematically adjust and align work with each other for greater outcomes	Longer team interaction based on shared mission, goals; also shared decision-making and resources	Fully integrated programs, planning, and funding



The programme is funded by the European Union

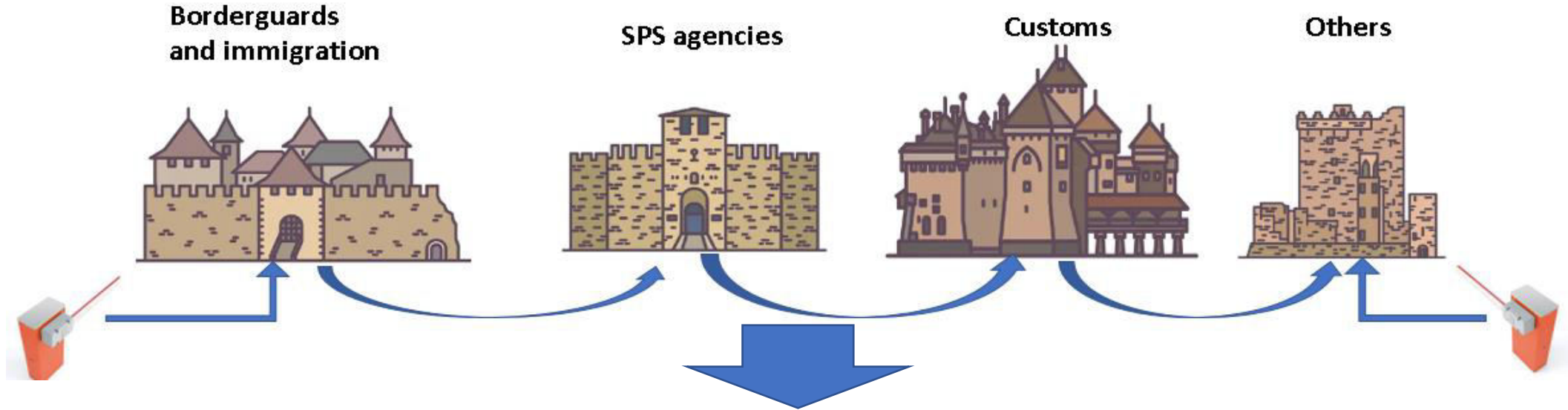


BOMCA
BORDER MANAGEMENT
PROGRAMME IN CENTRAL ASIA



**RIGA TECHNICAL
UNIVERSITY**

Fortresses approach



Integrated Border Management





The programme is funded by the European Union



BOMCA
BORDER MANAGEMENT
PROGRAMME IN CENTRAL ASIA



**RIGA TECHNICAL
UNIVERSITY**

Integrated Border Management Strategy



1. assess

- findings of the previous period
- environmental scanning
- analysis of target groups
- SWOT



2. design

- mission
- vision
- values



3. build

- priorities
- goals
- KPIs
- budget



4. manage

- internal, external communication
- progress measurements
- clarifications in strategy





The programme is funded by the European Union



BOMCA
BORDER MANAGEMENT
PROGRAMME IN CENTRAL ASIA



**RIGA TECHNICAL
UNIVERSITY**

Mission

TOP 7 countries
lowest in
the safety and
security category*

Ranking GDP
per Capita
2022

1. Finland
2. Japan
3. Iceland
4. Singapore
5. Norway
6. Denmark
7. Switzerland

2. Singapore
4. Norway
7. Switzerland
9. Denmark
12. Iceland
21. Finland

*) Index is compiled by the Institute for Economics and Peace (IEP), 2023



Border crossing
& trade
facilitation



Border security



The programme is funded by the European Union



BOMCA
BORDER MANAGEMENT
PROGRAMME IN CENTRAL ASIA



**RIGA TECHNICAL
UNIVERSITY**

Border management target groups

facilitate the movement of goods and people



Transportation and Trade Industries



Government

safety & security,
revenue, trade
facilitation, internal
market protection

safety & security,
welfare
freedom of
movement



Local Communities



International organizations

supporting and
coordinating cross-border
initiatives, facilitating
cooperation

safety & security,
welfare
freedom of
movement



The General Public



**Non-Governmental
Organizations**

human rights, refugee
issues, and
humanitarian aid



The programme is funded by the European Union



BOMCA
BORDER MANAGEMENT
PROGRAMME IN CENTRAL ASIA



**RIGA TECHNICAL
UNIVERSITY**

Vision

Strategic vision is a concise **long-term vision of the future** that both demonstrates the organization's **unique values** and describes its **ambitions** in the context of **achievable results**.

atio

The formuln of the vision contains the answer to the following questions:

- What is the **desired future** for our organization?
- What are our **long-term ambitions**?

A vision is a long-term vision – it **extends beyond** the term of a single strategy.



Existing formulations:

- **Safest external borders** in the future;
- To make **cooperation** with third countries **more effective**;
- A **high level of performance** is ensured by reliable, well-trained **professional staff**, specialized border guard organizations, **extensive coordination and cooperation**, and **state-of-the-art technologies**.
- To **increase internal security** and contributes to **smooth border crossings** across the external borders and **free movement within the Schengen area**



The programme is funded by the European Union



BOMCA
BORDER MANAGEMENT
PROGRAMME IN CENTRAL ASIA

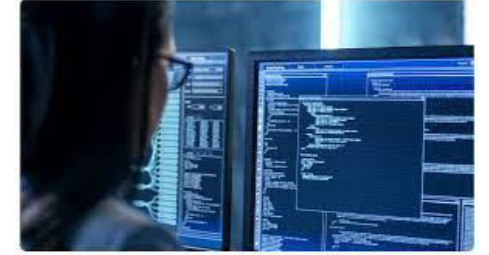


**RIGA TECHNICAL
UNIVERSITY**



Artificial Intelligence

In 2033, our external border will be the most secure and low-risk individuals and cargo will cross it without stopping.



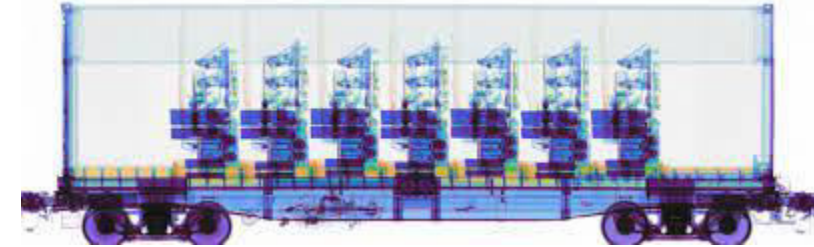
Intelligence



Big Data Analysis



CRAFTING THE FUTURE
<https://gef.eu/partner/vision/>



Scanning Technologies



Risk Management CIRAM, CRM



E- Passport



Smart Gates



The programme is funded
by the European Union



BOMCA
BORDER MANAGEMENT
PROGRAMME IN CENTRAL ASIA



**RIGA TECHNICAL
UNIVERSITY**

Thank you for your attention!