



PSW

PAKISTAN SINGLE WINDOW

QUICK FACTS

A category 'C'
commitment under the
WTO
(Article 10.4)

Lead Agency
Pakistan Customs

Operating Entity
Pakistan Single Window
Company

Phase 1 roll out
30th June 2022

Potential savings
\$430 million per annum

Estimated Budget
\$67 million (including
three years OPEX)

Sponsors
Government of Pakistan,
Pakistan Customs, and
Donors

Multi-donor collaborative
effort

SERVICES

Online Evidence of
Identity
Customs Registration

Integration Of
Commercial Banks

E-Trade

Single Declaration

Trade Information
Portal

Digital Payments

International
Integrations

ONE WINDOW
MANY DOORS

**CRITICAL
SUCCESS
FACTORS**

REGISTERED No. M-302
L-7646

The Gazette of Pakistan

EXTRAORDINARY
PUBLISHED BY AUTHORITY

ISLAMABAD, WEDNESDAY, APRIL 14, 2021

PART I
Acts, Ordinances, President's Orders and Regulations

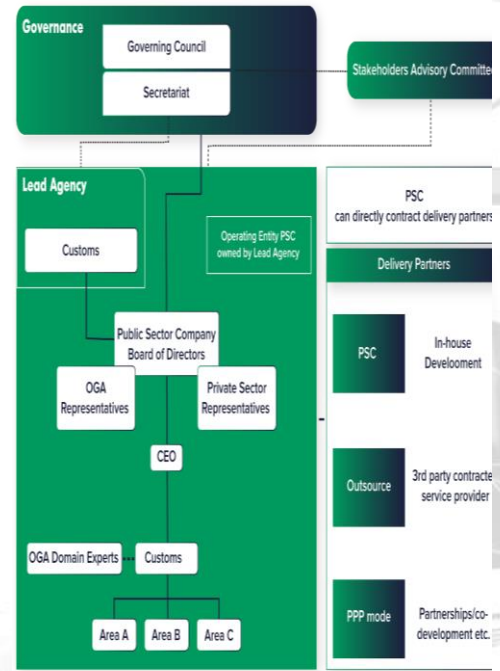
SENATE SECRETARIAT
Islamabad, the 13th April, 2021

No. F. 9(3)/2021-Legis.—The following Act of Majlis-e-Shoora (Parliament) received the assent of the President on 9th April, 2021 and is hereby published for general information:—

ACT No. III of 2021

An Act to make provisions for the establishment of Pakistan single window

In so far as relevant to the intent and objects of this Act and in order to ensure unhindered right to lawful trade as enshrined in Article 18 of the Constitution of the Islamic Republic of Pakistan it is necessary that an



- Consultation, collaboration, coordination
- Legal framework (PSW Act, 2021)
- Hybrid governance and operating model
- Digital transformation
- Incremental approach towards implementation
- Political ownership

**ONE WINDOW
MANY DOORS**

UPCOMING SERVICES



SERVICE PROVIDERS



SINGLE REGISTRY FOR
TRADE



INTEGRATED RISK
MANAGEMENT SYSTEM



AIR- AND SEA PORT
COMMUNITY SYSTEMS



CUSTOMS MANAGEMENT
SYSTEM

ONE WINDOW MANY DOORS

IMPLEMENTATION JOURNEY

2017



POLITICAL OWNERSHIP
VISION ARTICULATION



2018-2020

FOUNDATIONAL STUDIES



2021

GOVERNANCE & OPERATING
STRUCTURE



2022

PHASE 1 ROLL OUT

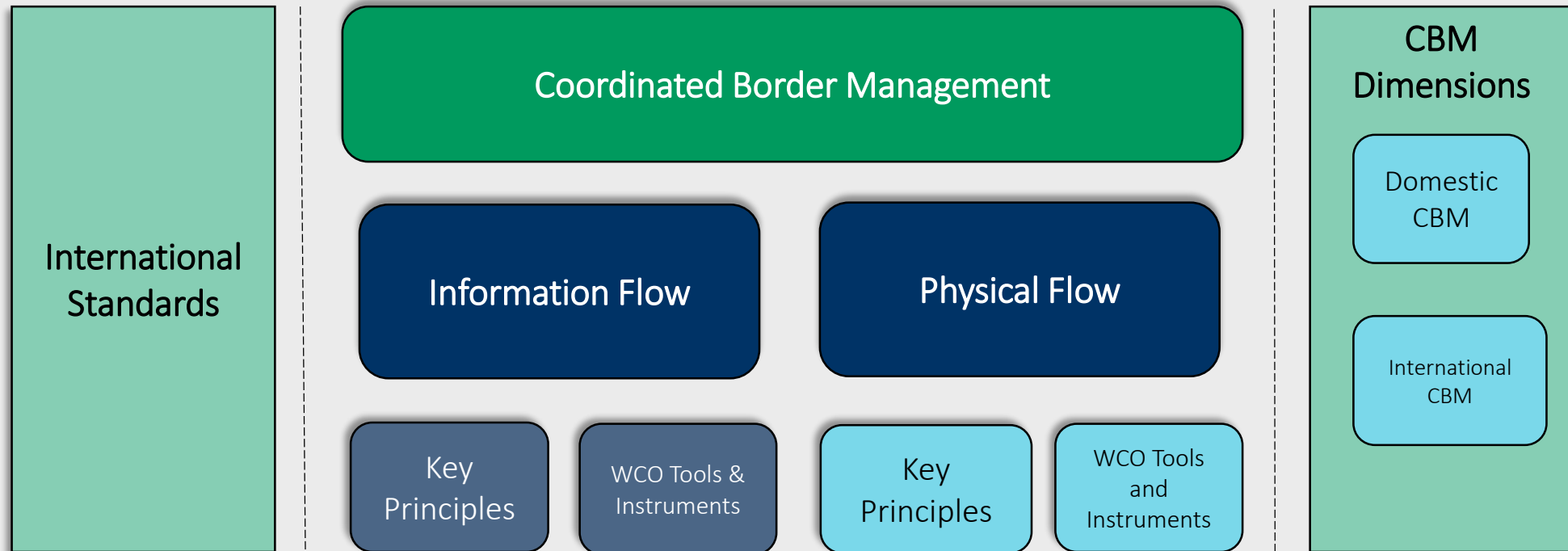
ONE WINDOW MANY DOORS

October 2017

June 2022

Similarities between Coordinated Border Management (CBM) and National Single Window (NSW)

- Coordinated Border Management (CBM) has some similarities with National Single Window (NSW) implementation as the individual agencies have to give up their existing jurisdictions and mandates.



PSW: Data Sharing Platform

- PSW is a digital platform and has demonstrated capacity to integrate 77 agencies on unified governance framework.
- PSW has a robust policy and governance framework that closely works with the OGAs to suggest policy interventions and legal changes to accommodate seamless integration in Single Window.
- E.g. Integrated Risk Management System (IRMS), the OGAs have developed risk rules and parameters that would be fed in the risk management engine

PSW: International Integrations

PSW has integrated national data bases and now successfully initiated:

- Integration with China Single Window
- TradeLens Maersk
 - Abu Dhabi Customs
 - Korea/Hyundai
 - Kenya
- International Plant Protection Agency via ADB
- UK Customs
- Egypt Customs

Way Forward: Data Analytics

- The methodology of national level digital sharing is already in place and PSW is utilizing the national identity and registration databases to facilitate customs, and other government agencies
- National Data Sharing Rules have been drafted and under process of approval
- PSW NEEDS big data analytics capability
- PSW plans to connect the national databases with cross border data exchange platforms